

November 2018

Materials

9 3/8 x 4 7/8 Real Red Card ~ see next page for scoring (pg 187)
3 1/2 x 2 1/2 Whisper White Card (g 184)
3 1/2 x 2 1/2 Under the Mistletoe DSP (pg 189)
3 3/4 x 1 1/4 Under the Mistletoe DSP
Scraps of Whisper White and Real Red Card
Metallic Pearls (pg 197)
Silver Whisper White Bakers Twine (pg 201)
Stampin Dimensionals (pg 213)
Glue Dots (pg 213)
Tear and Tape (pg 219)

Equipment

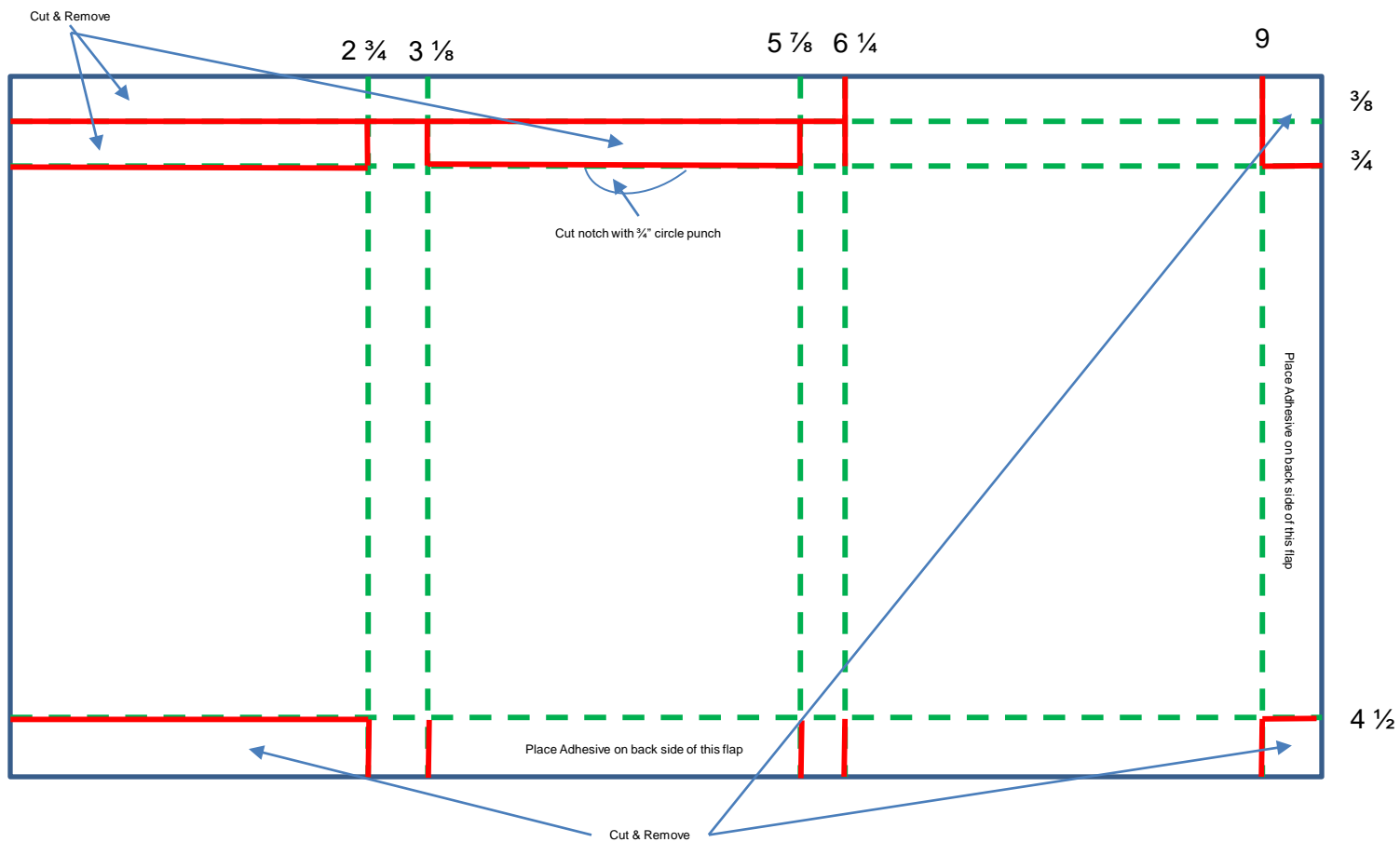
Mistletoe Season Stamp Set (pg 95)
Shaded Spruce Ink Pad (pg 187))
Pretty Label Punch (pg 211)
Simply Scored Scoring Tool (pg 208)

3 Snack size Hershey Bars (0.45oz)



Cutting and scoring for gift card holder

Card size = $9 \frac{3}{8}$ x $4 \frac{7}{8}$ in Real Red



Grateful thanks to Elly of EllyMentry
Papercrafts for help with this design

